

# *Old Pueblo A*

## *January 2021*



# *Tucson Chapter*

**Model A Ford Club of America**



# OLD PUEBLO A



Official Monthly Publication  
Tucson Chapter, Model A Ford Club of America  
7060 E. 21st Street, Tucson, AZ 85710  
[www.tucsonmodelafordclub.org](http://www.tucsonmodelafordclub.org)

## ADVERTISING RATES:

Cover Ads.....\$20.00/year

### EDITOR:

David Rivard

PO Box 249

Vail, AZ 85641

520-428-4929

[modeladude@outlook.com](mailto:modeladude@outlook.com)

## TUCSON CHAPTER DUES:

\$15/year family or

\$10/year individual

### MEETINGS:

Regular meetings are held on the  
first Tuesday of each month  
(except December) at 7:30 PM.

Jim Click Ford

6244 E. 22nd Street

Tucson, AZ 85711

### MONTHLY OUTING:

Fourth Sunday of the month  
or as voted by the  
club membership

The Tucson Model A Club is  
a local chapter of MAFCA:

Model A Ford Club  
of America, Inc.

250 S. Cypress Street

La Habra, CA 90631

562-697-2712

Toll free (for orders only,  
including MAFCA membership):

866-379-3619

[www.mafca.com](http://www.mafca.com)

## 2021 OFFICERS

### President:

David Ramsower

[ramsworth@gmail.com](mailto:ramsworth@gmail.com)

520-661-4493

### 1st Vice President:

Sindy Osterman

[scubamngirl51@gmail.com](mailto:scubamngirl51@gmail.com)

651-338-3390

### 2nd Vice President:

Rey Brown

[softtopcoupe@yahoo.com](mailto:softtopcoupe@yahoo.com)

520-296-2079

### Treasurer:

Mike Liebert

[hikingmike@aol.com](mailto:hikingmike@aol.com)

520-529-8662

### Secretary:

Frank Pyrdeck

[frankpyrdeck@aol.com](mailto:frankpyrdeck@aol.com)

520-870-9017

## 2021 BOARD OF DIRECTORS

Chuck Thim

Ray Feierstein

Dan Jensen

Tom McWilliams

Ernie Williams

Joe Findysz

# *Tucson Meadows Lighted Christmas Parade*

On December 13, members Al and Herald Montgomery decorated and drove Herald's roadster in the Tucson Meadows lighted Christmas parade. Joe Findysz displayed and drove his decorated fire truck, residents decorated their golf carts, and even Santa made an appearance.....It was a nice night for a parade. - Al Montgomery



# Tucson Meadows Lighted Christmas Parade



## *Building a Model A Tool Display Case*

Ford originally included a set of Model A tools with each new Model A. However, those original tools can be hard to find today. Some may have been melted down during the scrap metal drives held during World War II, but whatever the reason, there are more Model A's than tool sets today. Consequently, they can be expensive and difficult to find.

Member Al Montgomery has been gradually collecting original Model A tools since the 1970's. Whenever he found one for sale that he didn't have, he added it to his collection. At the same time, he began building and restoring his December 1930 closed cab pickup, beginning with the cab, doors and a gas tank. Although he mostly finished the pickup by 1986, he continued to find and collect the tools to go with it.

In January of 2020, Al met a member who owned an original Model A tool kit in a case. Al decided to build his own case to hold and display his own tools with his car at car shows. He designed the case himself using a CAD system at work, and began building the case in October of 2020 over several weekends, completing it in late December. Various parts and fasteners for the case were purchased from McMaster-Carr, a company in Elmhurst, Illinois that Al knew from his work. Other parts were obtained from Amazon. Al had the engraved name tags made locally at Badgeman in Tucson. Al was especially impressed with their great service, and he highly recommends them as a local business to support if you need name badges, trophies, awards or similar items. They are located in northeast Tucson and can be reached at 885-5532.

Following are the pictures Al took as his project progressed.



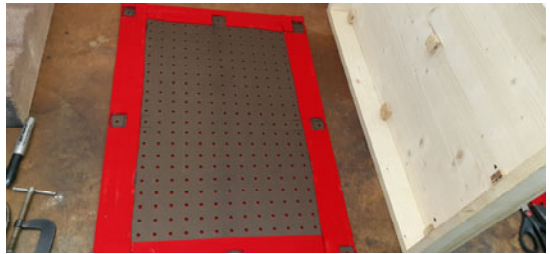
Individual wood pieces were cut and assembled to create two rectangular, open-faced boxes.

# Building a Model A Tool Display Case

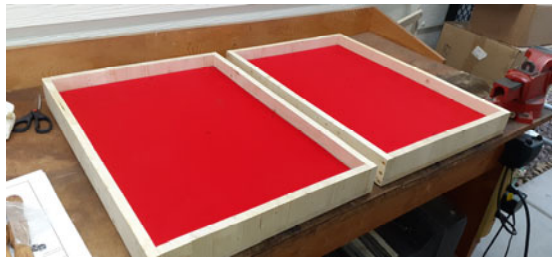


The two open-faced halves were then attached with hinges, latches and a handle to create a suitcase-style box.

Pieces of pegboard were cut to fit inside the two halves and covered with red felt. The backsides were fitted with standoffs to attach



the pegboard panels to the back of the case halves, leaving a gap to accommodate the ties that would hold the tools in place and allowing for the pegboard panels to be removed if needed.



The case was then stained, and standoffs attached to the back pieces to mate with the pegboard standoffs.



Here is the engraved name plate to be displayed with the tools.

# Building a Model A Tool Display Case



These are the two felt-covered pegboard panels with the engraved tag and the tools attached using black ties.

Here is Al with the completed display case.



Al also purchased a zippered, heavy-duty bag with handles to store and protect the case between showings. The total weight is around 50 pounds.

# EVENTS CALENDAR

Due to the current pandemic and associated social distancing requirements, our club outings and monthly general meetings have been temporarily suspended. We will resume our usual club activities as soon as the public health situation permits. Evaluation is being done on a month-by-month basis. Nothing is currently scheduled for January or February, but see below for an unsponsored opportunity to show your car.

Meanwhile, our monthly newsletter (the one you're reading now) will continue as usual with Model A articles, news and items of general interest to Model A club members.

Club announcements will appear in the newsletter and be sent out via email to all club members who have provided their email address. If you're not already receiving club announcements from Ray Feierstein via email and want to be included, please email Ray at [sanrays@msn.com](mailto:sanrays@msn.com) and ask to be added to the list.

## *Trail Dust Town Car Show* *Sat January 30 — Sun January 31*

Ernie Williams is coordinating an unsponsored opportunity to show your car at Trail Dust Town the weekend of Jan 30-31. Below are the details from Ernie. Call him directly at 360-5074 if you would like to participate:

I am putting together an activity at Trail Dust Town for a mini Dillinger Days event on Saturday Jan 30 and Sunday January 31. This will be display only, no driving. They want 10 cars and will place them inside the courtyard Gazebo area. Our cars need to be in place by 4 PM and can be moved out after 8 PM. We can leave them overnight if we wish and there will be security persons and chained entrance after 8 PM. Or we can take them home and return on Sunday or even bring a different car on Sunday. Contact me if bringing a car so I can keep track. It will be fun. I'm not sure what they have planned. No compensation, just an outing.

- Ernie Williams



# January



- Jan 2 – John Leydon
- Jan 3 – Kristin Ferrera
- Jan 4 – David Duran
- Jan 10 – Charles Molander
- Jan 10 – Barbara Sue Scheer
- Jan 16 – Lynn Thim
- Jan 17 – David Ramsower
- Jan 18 – Paul Harper
- Jan 19 – Nathan Abel
- Jan 19 – Rick McLain
- Jan 21 – Richard Whalen
- Jan 23 – Nancy Steele
- Jan 23 – Peter Reding
- Jan 24 – Hearold Montgomery
- Jan 26 – Sindy Osterman
- Jan 28 – Robert Saxwold
- Jan 31 – Dick Upton

## **NEXT MEETING:**

To be scheduled as soon as public health conditions permit. See page 8 for more information.



**Happy 95th Birthday to  
Hearald Montgomery  
on January 24!  
He's older than his Model A!  
Congratulations!**



## *Happy Anniversary*

- Jan 6 – Jim & Sally Beebe
- Jan 25 – Fritz & Jeanne Mietzner



## Club News

Bob Karn and Christina Laukaitis, members since 2014, recently moved to Illinois. They plan to remain members of our club and attend future Holiday Banquets when possible. In appreciation for the moving and storage assistance they received from Shorty Allison and Rich Whalen, they generously chose to become club sponsors with a sizeable donation to our club. See page 11 for more information. We gonna miss dem!

## *Reminder: Don't Pay Your Dues!*

*As previously announced, all paid 2020 Tucson Model A Club memberships have been automatically extended through 2021 at no additional cost. Send no money!*

## *In Memoriam*



We were saddened to learn of the sudden passing of one of our newest members, Ray Olson, on November 5 at age 91. Ray joined our club just last year, but we never had a chance to meet him in person due to the pandemic.

Ray's parents immigrated from Sweden in the early 1900's, and Ray grew up in Crystal Lake, Illinois. He earned his medical degree in 1956 and married his childhood friend Nancy. Ray and Nancy lived in various cities across the country before finally arriving in Tucson in 2017 to be near their daughter Marie. Sadly, Nancy passed away in October 2019, after 63 years of marriage.

A memorial service for Ray was planned for a future date, to be determined. Ray would have been 92 this month on January 25.

# *Certificate of Appreciation*

*This Certificate is presented to*

*Bob Karn and Christina Laukaitis*

*on this 5<sup>th</sup> day of January, 2021*

*in appreciation for*

*Exceptional support of the Tucson Model A Club*

Greetings and Happy New Year to all our friends in the Old Pueblo Model A Ford Club:

It's a privilege to make a contribution in honor of Shorty Allison and Rich Whalen who helped us move our cars to our new home in Urbana, Illinois. Shorty made space available at APCON for our three cars to be stored until the car movers arrived, which was after we had to begin our trip to Urbana in a rented motorhome. Rich helped us move the cars from our Tucson residence to APCON to be stored and was there on moving day to make them available when the car movers arrived. This is our way of thanking them for their time and effort in the moving process.

Christie and I plan to continue our association with the Old Pueblo Club for the foreseeable future with tentative plans to get to as many holiday parties as possible. We are also joining the Prairie A's Chapter of MAFCA here for regular participation. If you wish to reach us, or happen to be in the area, our new home address is 3410 S Persimmon Circle, Urbana, IL 61802. You can also send us email at the address listed in the 2020 roster.

Best,  
Bob and Christie

# Jim's Tech Tip

## by Jim Cannon

*Ford originally used a fine mesh brass screen at the top of the glass fuel strainer bowl that's mounted to the Model A firewall. The bowl gives a place for water to settle into (water is heavier than gasoline) and a place for dirt and rust particles to collect.*

*The screen also keeps these particles from traveling down to the carburetor (where you have another screen!). With all these screens, I think Ford knew that gasoline supplies at the time were prone to contamination (more than today).*



*Many people have started to install a small pleated paper filter element in the glass bowl instead of the brass screen.*

*I'm not so sure it's needed; I think the brass screen is enough. The Model A has no fuel pump, it relies only on gravity feed, and I'm concerned about adding another restriction to the fuel flow.*

*But IF you use one of these paper filters, you need to know that the rust, dirt, etc. is trapped INSIDE the paper element, not on the outside of it like you'd think. Therefore, you can be collecting a lot junk inside the filter, plugging up the filter element on the inside, and not even know it. One day, you lose all your power and the engine really acts like it is starving for fuel. You thought you would see the rust and dirt collect on the outside of the filter ... but you don't. Surprise! (I hate surprises!)*

*So, if you are going to use these pleated paper filters, get into the habit of replacing them regularly, maybe once a year, since you can't see how dirty they are inside. And carry a spare filter and gasket with you in the car. It's a pretty easy thing to swap out in a parking lot. Kind of messy, but it can be done without tools. Use some disposable gloves and you won't smell like gas for the rest of the day.*

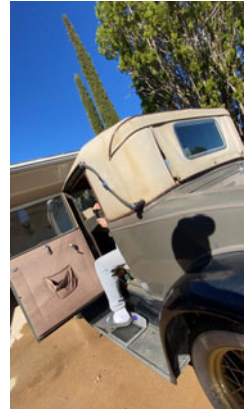
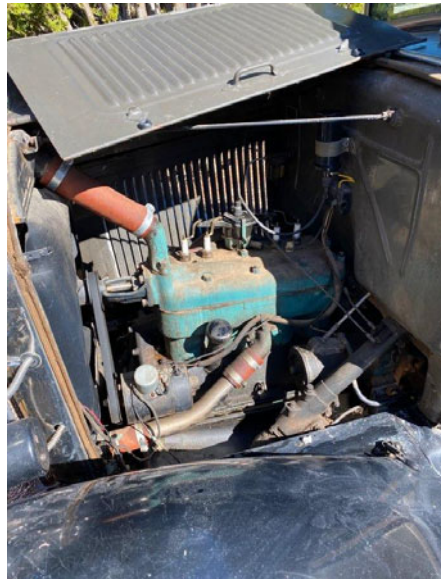
*That's all for now. Keep driving, help each other out, and Have a Model A Day!*

*- Jim*



# Model A Sport Coupe For Sale

Attached are a few pics of the 1930 Ford Model A Sport Coupe that my Dad is selling. He is asking \$15,000.00. The best contact is myself, Alison Mills. My phone number is 520-488-3612 and [alison.mills@titlesecurity.com](mailto:alison.mills@titlesecurity.com) for email. Please contact me if you have any questions or need any further information.





## Tucson in the 1930's

Baffert and Leon wholesale grocery company on Toole Ave, near 6th Ave., Tucson, ca. 1930s. The company obtained an injunction against construction of the Stone Avenue Subway (railroad underpass) in 1934 claiming extensive damage.

## Thank You to Our 2021 Club Sponsors

Bob Karn & Christina Laukaitis

Jim Click Ford

Shorty & Isabel Allison

Mike & Ann Liebert

Scott & Cathy Parsons

Chuck & Lynn Thim

David & Molly Ramsower

**APCON**

CONSTRUCTION CO., INC.  
CONTRACTOR LIC. #072149

Cellular Phone  
(520) 982-8965

Email  
Sapcon@aol.com

"SHORTY"  
**LELAND ALLISON**  
President

Phone: (520) 747-4934  
Fax: (520) 571-8688  
3731 S. Chrysler Avenue  
P.O. Box 27106  
Tucson, AZ 85726-7106



**Ace Hardware Stores Inc.**

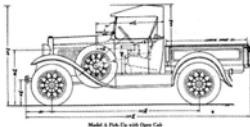
6959 E. 22nd St.  
Tucson, AZ 85710  
PHONE: (520) 747-9473  
CELL: (520) 954-0372  
FAX: (520) 747-1290  
EMAIL: joe@135hardware.com

**JOSEPH T. FINDYSZ**  
President

*Cooldest Hardware Store on the Planet 2016*

### Old Cars R&R

Repair, Restoration, and Maintenance  
**Rich Whalen**



520-203-1784  
richwhalen@live.com

11863 N Centaurus Pl  
Tucson, AZ 85737

**NIHOTO**

Tucson's Most Reliable & Complete Independent Repair Facility.  
Nissan, Honda & Toyota Mechanics.

**Andy Neal Jr.**

Servicing  
**Nissan, Honda, Toyota**

Model T's and Model A's

560 E. Fort Lowell Rd. • (520) 622-3315

## LEVER SHOCKS REBUILT BRAKES SLEEVED AND REBUILT

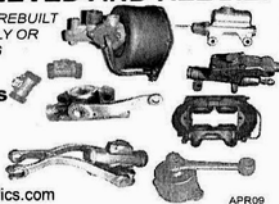
EXCHANGE OR YOURS REBUILT  
BRAKES: SLEEAVING ONLY OR  
COMPLETE REBUILDING  
FAST SERVICE

### Apple Hydraulics

1610 Middle Road  
Calverton, NY 11933

1-800-882-7753  
(631)369-9515

<http://www.AppleHydraulics.com>



APR09

## M M MITCHELL MANUFACTURING



Steve & Cyndi Mitchell

Mitchell MFG.  
530-458-4500 800-859-2088  
[www.mitchelloverdrivemfg.com](http://www.mitchelloverdrivemfg.com)

MODEL A FORD  
SYNCHRONIZED-TRANSMISSION FORD OVERDRIVES/UNDERDRIVES  
VINTAGE CAR OVERDRIVES 1928-1948

P.O. Box 925 1157 Parker St. Colusa, CA 95932

## ARIES MUFFLERS & PARTS

ORIGINAL MODEL A FORD EXHAUST SYSTEMS  
MADE PRECISELY TO THE FORD DESIGN

ALSO STATION WAGON TAIL PIPES AND  
FORDSON TRACTOR MUFFLERS(1917-1936)

AMUFFLER.COM JDAVIS@AMUFFLER.COM  
650.279.6609

## CLING'S

Send \$15.00 for booklet on  
How to Prepare 1939-1948  
Hydraulic Backing Plates

AFTERMARKET PRODUCTS, INC.

Specializing In Hydraulic Brakes for Model A's  
Serpentine Pulley System for Model A & B  
V8 Transmission Adapter (for L & R Hand Drive)

12452 S. 71st St. • Tempe, AZ 85284-3108  
(480) 777-1202 • Email: [dcmcl202@cox.net](mailto:dcmcl202@cox.net)  
[www.clingsaftermarket.com](http://www.clingsaftermarket.com)

The World's Largest Selection of 1909-31 Ford Parts

## Snyder's ANTIQUE AUTO PARTS

12925 Woodworth Rd. • New Springfield, OH 44443

Toll Free Ordering (888) 262-5712

or FAX (888) 262-5713

Order On-Line @ [www.snydersantiqueauto.com](http://www.snydersantiqueauto.com)

FREE Fully Illustrated CATALOG  
\$10.00 outside the U.S., Canada, & Mexico



## ARIZONA MODEL A, L.L.C.

- NEW PARTS
- USED PARTS
- SERVICE
- RESTORATION
- HOUR: TUES-FRI 9-12, 1-5  
SAT & EVES BY APPOINTMENT



SAMUEL P. GUTHRIE

15838 S. GILBERT RD., CHANDLER, AZ 85225  
(480) 782-0266

## BRATTON'S ANTIQUE AUTO PARTS

1606 Back Acre Circle  
Mount Airy, MD 21771

800-255-1929 Phone  
[www.brattons.com](http://www.brattons.com)

800-774-1930 Fax



JAY BEES  
Auto Services



Jacqui Harry  
Owner

790-6035

M-F 8am-5pm

5070 E. 22nd St. • Tucson, AZ 85711  
[www.jaybeesautoservice.com](http://www.jaybeesautoservice.com)

Mike's "A" Ford-able Parts

## Mike Butcher



124 Model A Drive, Maysville, GA 30558

email: [mike@mikes-afordable.com](mailto:mike@mikes-afordable.com) - [www.mikes-afordable.com](http://www.mikes-afordable.com)

Fax: 706 652 2492 - Phone: 706 652 3866

1 888 TRY MIKE (879 6453)



Specialising in 1928 - 1931 Model A Ford Parts

## RUSTY LUGS

SPECIALIZING IN MODEL A'S

Amanda Uthe  
Owner



360-887-3346

[Rustylugparts@gmail.com](mailto:Rustylugparts@gmail.com)

8021 Ne 142nd Ave

Vancouver, Wa 98682

Hours: M-F 9am-5pm

[RustyLugParts.com](http://RustyLugParts.com)

**7060 E. 21st Street  
Tucson, AZ 85710**

## **First Class**

**Jim Click Ford**

Sponsors the Tucson Chapter

Model A Ford Club of America

